

JILONG

Founded  in 1993

COMPLETE CATALOGUE

2026

Supplying of optical communication products and providing of solutions





NANJING JILONG

Optical Communication Co., Ltd

Since 1993,
NANJING JILONG
Communications has
been tirelessly researching
and developing fiber optic
splicing technology for nearly 30
years, and has obtained more than 150
related patents...

For almost 30 years, Jilong has been tirelessly
researching and developing optical splicing technology,
and has obtained 150+ related patents.

Jilong communication took the lead in breaking the monopoly of
foreign technology of fiber splicer, improved development of domestic
splicer technology, and had made a great contributions to domestic 4G, 5G
network construction and fiber telecommunication industry. Jilong
communication, the pioneer of domestic optical fiber fusion splicer.



JILONG won the national "high-tech Technology Enterprise" title, and won the
"Outstanding Contribution Enterprise of Nanjing" for many years "JILONG" was identified
as famous trademark of Jiangsu Province...



Since 1993, JILONG Communications has been tirelessly researching and developing fiber
optic splicing technology for nearly 30 years, and has obtained more than 150 related patents...



JILONG Communication has successively obtained ISO9001 quality management system
certification, ISO14001 environmental management System certification, JILONG products
have passed the EU CE safety certification...

CONTENTS

FUSION SPLICER

4-10

300T G654E 6-Motor Trunk Fusion Splicer	4
280T All-rounder™ Mid-Trunk Fusion Splicer	5
260T FTTx Fusion Splicer	6
500E Mini FTTx Fusion Splicer	7
KL-33F One-Step Fiber Cleaver	8
KL-21C High Precision Fiber Cleaver	9
KL-22F Fiber Cleaver	9
KL-23F Fiber Cleaver	10
KL-51 Fiber Optic V-groove	10

OTDR

11-14

KL-6100 FTTx OTDR	11
KL-6200 FiberSMART OTDR	12
KL-6300 Fiber Monster OTDR	13
KL-6400/6500 Optical Cable Identifier	14
OLC-200 OTDR Dead Zone Eliminator	14

FIBER METER

15-19

OLS-33 Optical Light Source	15
OPM-33 Optical Power Meter	
OPM-33P Split wave Power Meter	
GPN-33 GPON Power Meter	16
XPN-33 10GPON Power Meter	
OPM-33V OPM & VFL	
FOT-33 Optical MultiMeter	17
OVA-33 Optical Attenuator	
OPM-22/22V Mini Power Meter	
OLS-22 Optical Light Source	18
VFL-22 Mini Visual Fault Locator	
VFL-22P Pen Style Visual Fault Locator	19
OFI-60V/P Optical Fiber Identifier	

CLEANING & INSPECTION ITEMS

20

FIP-43V Fiber Inspection Scope _____ 20

FIP-50V Fiber Inspection Scope _____ 20

CONSUMABLES AND ACCESSORIES

21

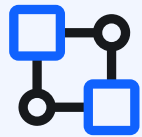
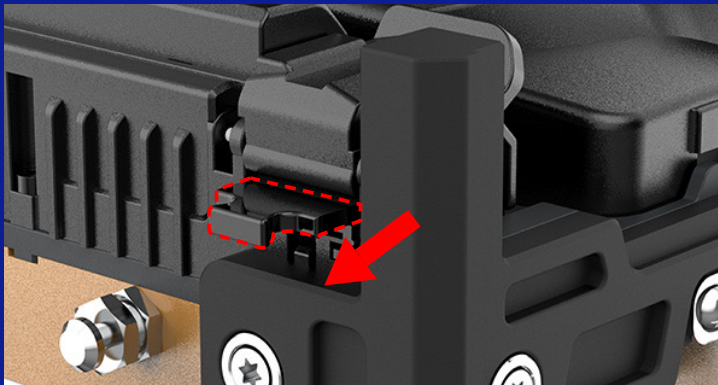
JBL-16/23 Optical Fiber Cleaver Blade _____ 21

KL-ELE-N Electrodes for Fiber Fusion Splicer _____

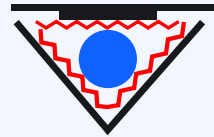
300T

G654E 6-Motor Fusion Splicer

- Suitable for G654E fiber
- All-Metal construction
- 5.0-inch HD touch screen
- 6s splicing;10s heating
- 9000mAh Li-ion battery
- 3D surround dual heating slots
- Tool-Less disassembly SOC holder
- 3-Year warranty



**Tool-free Disassembly
Integrated SOC Fixture**



**3D Surrounds Dual
Heating Element**

Applicable Fibers	SM(ITU-T G.652&G.657) / MM(ITU-T G.651) / CS(ITU-T G.654) / DS(ITU-T G.653) / NZDS(ITU-T G.655)
Typical Splice Loss	SM: 0.02dB / MM: 0.01dB / CS: 0.03dB / DS: 0.04dB / NZDS: 0.04dB / G.657: 0.02dB
Return Loss	>>60dB
Splicing Time	6s (SM G652 Quick mode)
Heating Time	10s (SM G652 250µm Quick mode 40mm sleeve) adjustable
Battery	10800mAh Battery Capacity, Typical 350 Cycles (Splice&Heat) per Charge
Electrode Life	5000arcs (replaceable)
Auto start	Splicing /Heating
Monitor	5.0-inch Touch Screen

★ With identical fibres(in room temperature). Measured by cut-back method relevant to ITU-T and IEC standards.

★ Splice & Heat cycles may vary depending on the battery status and the operating environment.

★ Electrode life may vary depending on the operating environment.

280T All-rounder™

Mid-Trunk Fusion Splicer

- 4.3-inch touch screen
- 4-Motor fusion splicer
- 8s splicing;18s heating
- Core alignment & active core viewing
- Tool-Less electrode replacement
- 5000+ splice life (replaceable electrodes)
- 6800mAh Li-ion battery
- 3-year warranty



Applicable Fibers	SM (ITU-T G.652&G.657)/ MM (ITU-T G.651)/ DS (ITU-T G.653)/ NZDS (ITU-T G.655)
Compatible Fiber/Cable	0.25-3.0 mm /indoor flat cable
Fiber Holder	Replaceable
Fiber Diameter	Cladding:80-150μ m,Coating:100-1000μm
Typical Splice Loss	SM: 0.03dB / MM: 0.01dB / DS: 0.04dB / NZDS: 0.04dB /G.657: 0.03dB ★①
Return Loss	>>60dB
Splicing/Heating Time	SM Quick mode: 8 sec/ Quick mode 18 sec. (SM G652 250μ m 40mm Sleeve) adjustable ★②
Protection Sleeve Length	20mm,30mm,40mm, 50mm,60mm
Battery	6800mAh Battery Capacity, Typical 300 Cycles (Splice&Heat) per Charge ★③
Electrode Life	5000 arcs (replaceable) ★④

★① ★ With identical fibres(in room temperature). Measured by cut-back method relevant to ITU-T and IEC standards.

★② 0.25mm fiber,may vary depending on the battery status and operating environment.

★③ Splice & Heat cycles based on 40mm shrink tube

★④ Electrode life may vary depending on the operating environment.



Support the placement of cleaver operating platform, do cleaving and splicing work in one step

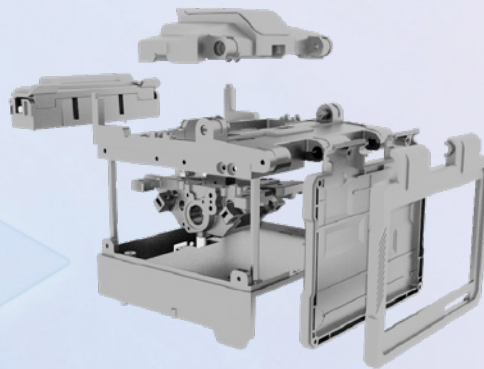
**High Expansibility
fiber optic cleaver
operating platform design**



260T

FTTX Fusion Splicer

- 4.3-inch capacitive touch screen
- All-Metal construction
- 8s splicing;10s heating
- 5200mAh Li-ion battery
- 3D surround dual heating slots
- Tool-Less disassembly SOC holder
- Tool-Less electrode replacement
- 3-year warranty



All-Metal* Construction

60%+

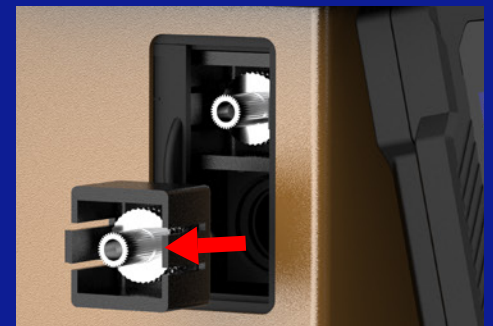
Metals make up 60%
of the non-battery weight



Tool-free Disassembly
Integrated SOC Fixture



3D Surrounds Dual
Heating Element



Tool-free Hot Swappable
OPM/VFL module

500E Mini

FTTX Fusion Splicer

- 8s splicing;18s heating
- Aerial work platform
- Tool-Less electrode replacement
- 4000mAh Li-ion battery
- 5000+ splice life (Replaceable electrodes)
- 3-Year warranty



★ (Operation platform be ordered separately)

Applicable Fibers	SM (ITU-T G.652&G.657)/ MM (ITU-T G.651)/ DS (ITU-T G.653)/ NZDS (ITU-T G.655)
Compatible Fiber/Cable	0.25~3.0 mm/indoor flat cable
Fiber Holder	Replaceable
Fiber Diameter	Cladding:80-150μ m,Coating: 100-1000μ m
Typical Splice Loss	SM: 0.03dB /MM: 0.01dB / DS: 0.04dB / NZDS: 0.04dB /G.657: 0.03dB ★①
Return Loss	>>60dB
Splicing/Heating Time	Quick mode:8 sec/Quick mode 18 sec. (SM G652 250μ m 40mm sleeve) adjustable ★②
Protection Sleeve Length	20mm,30mm,40mm,50mm,60mm
Battery	3400mAh Battery Capacity, Typical 120 Cycles (Splice&Heat) per Charge ★③
Electrode Life	5000 arcs (replaceable) ★④

★① ★ With identical fibres(in room temperature). Measured by cut-back method relevant to ITU-T and IEC standards.

★② 0.25mm fiber,may vary depending on the battery status and operating environment.

★③ Splice & Heat cycles based on 40mm shrink tube

★④ Electrode life may vary depending on the operating environment.



High altitude operation adaptability. Not only suitable for aerial work, also suitable for conventional ground work in any environment

Working platform design for aerial work



KL-33F

One-Step Fiber Cleaver

- All-Metal CNC machining
- Fiber holders: Universal, Dual-Fiber, and 3-in-1 holders
- Tool-less blade adjustment (patented)
- 72,000 Blade cleaving lifespan (replaceable)
- < 0.5° Cleaving angle (Typical)
- Applicable fiber types: 250μm to 3.0mm
- Lifetime free maintenance

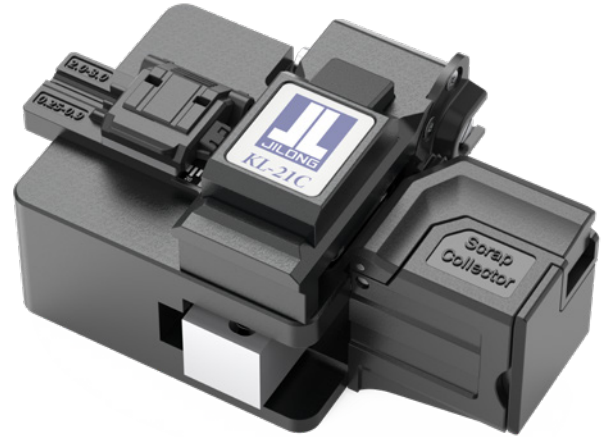


Product Model	KL-33F	KL-31F
Tool-free cleaver adjustment	✓	✗
Cleaving diameter	125um	
Cleaving length	Single-core: 8-20mm/Multi-core: 10mm	
Suitable optical fiber	Single-core: 250μm, 900μm, 3.0mm, drop cable/ Multi-core: 2 to 12 core	
Cleaving angle	Typical value <0.5**	
Blade life	72,000 cycles (replaceable)*	
Dual-core fixture	Standard configuration	
Universal fixture	Standard configuration	
3-in-1 fixture	Standard configuration	
Optical fiber storage box	Standard configuration	
Type of storage box	Manual operation	
Automatic cleaver return	Standard configuration	
Size	80.34W * 95.54D * 50.57H(mm)	
Overall weight	253.4g	
Metal weight	185.0g	

KL-21C

High Precision Fiber Cleaver

- Auto fiber offcut bin
- Blade cleaving lifespan: 48,000 (replaceable)
- Cleave angle < 0.5°(Typical)
- Applicable fiber types: 250µm to 3.0mm



Fiber Material	Silica glass
Cladding Diameter	125 µm
Cleaved Length	8~20mm
Applicable Fiber Cable	250µm, 900µm, 3.0mm
Typical Cleaved Angle	Less than 0.5° ★①
Typical Blade Life	Total 48,000 fiber cleaves (replaceable) ★②
Off-cut Collector	Pre-fitted
Type of Offcut Bin	Auto
Auto Return	Pre-fitted

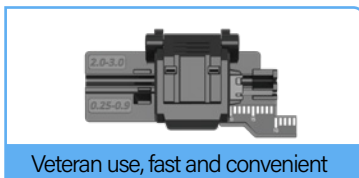
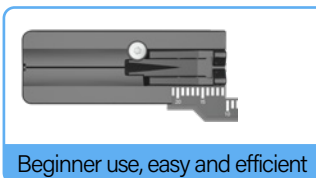
KL-22F

Fiber Cleaver

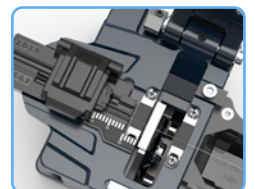
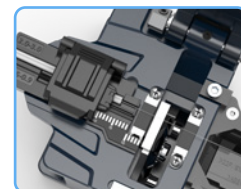
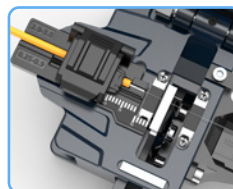
- Double fiber holders
- Cleave angle: ≤0.5° (Typical)
- Blade cleaving lifespan: 48,000
- Applicable fiber types: 250µm to 3.0mm



Standard dual fixture



All-in-1 Universal Fiber Holder



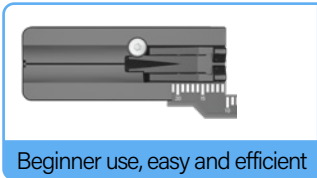
KL-23F

Fiber Cleaver

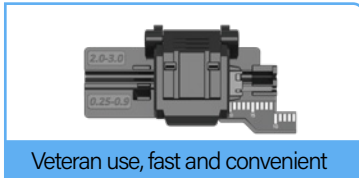
- Double fiber holders
- Cleave angle: $\leq 0.5^\circ$ (Typical)
- Blade cleaving lifespan: 48,000
- Applicable fiber types: 250 μ m to 3.0mm



Standard dual fixture

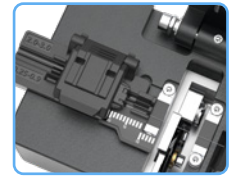
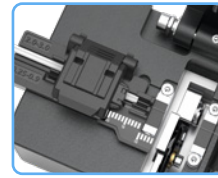
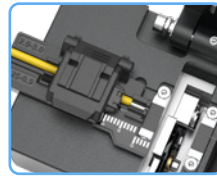


Beginner use, easy and efficient



Veteran use, fast and convenient

All-in-1 Universal Fiber Holder



Fiber Material	Silica glass
Cladding Diameter	125 μ m
Cleaved Length	8~20mm
Applicable Fiber Cable	250 μ m, 900 μ m, 3.0mm
Typical Cleaved Angle	Less than 0.5° ★①
Typical Blade Life	Total 48,000 fiber cleaves (replaceable) ★②
Off-cut Collector	Pre-fitted
Type of Offcut Bin	Manual
Auto Return	Pre-fitted

★① Cleaved angel may vary depending on the operating environment

★② Blade life is not guaranteed. It may vary depending on the operating environment

KL-51

Fiber V-groove

- Splice loss less than 0.05dB (SM)
- Two positioning seats (adjustable)
- High-precision V-groove alignment system
- Adapt to various cladding fibers



KL-6100

FTTx OTDR

- 4.3-inch touch screen
- 31dB dynamic range
- ≤ 1.5m event dead zone
- ≤ 5m attenuation dead zone
- 8x3m patch cords test (auto mode)
- 5000mAh high-capacity battery
- Built-in OPM/SLS/VFL/RJ45 modules

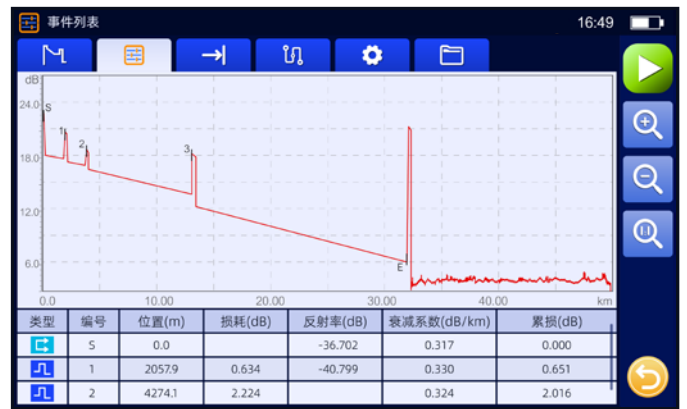


8x3m patch cords test (auto mode) (industry benchmark)

Real-time mode: Continuous testing and refreshing

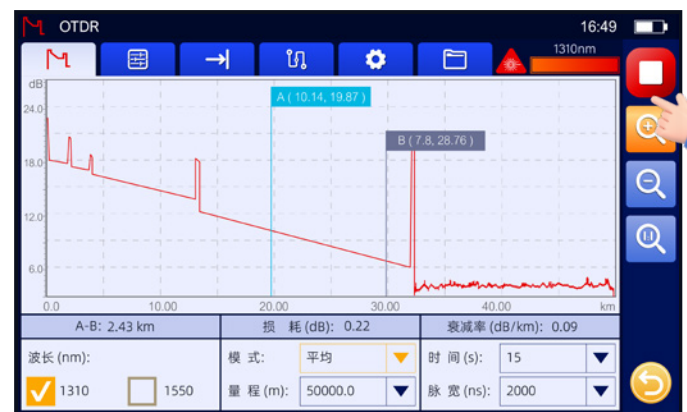


Short-distance test: Accurately measures fiber events and losses



Automatic mode: no tedious operations

Real-time mode: Continuous testing and refreshing



Model	S1	S2	P1	P2	M	D1	D2	D3	D4	D5
Wavelength(nm)	1310/1550 ±20	1310/1550 ±20	1310/1550/1625 ±20	1310/1550/1650 ±20	850/1300 ±20	1550	1610	1577	1625	1650
Dynamic range(dB)	26/24	31/29	26/24/24	26/24/24	21/19	24				
Event blind Spot (m)★①	≤1.5				≤2	≤1.5				
Attenuation blind zone (m)★②						≤5				

★1. Minimum pulse width, return loss: >55 dB (>40 dB for 850/1300 nm), group refractive index: 1.5, at 1.5 dB below the unsaturated peak level.

★2. Minimum pulse width, group refractive index: 1.5, at a point where the backscatter level is within +0.5dB of the normal level. For SMF, at 1310nm, return loss:>55dB.

All specifications valid at 23°C +2°C (73.4°F + 3.6°F) unless otherwise specified.

KL-6200

FiberSMART OTDR

- 1m event dead zone
- 32dB dynamic range
- 3-wavelength simultaneous test
- Built-in OPM/SLS/VFL/FIP/RJ45 modules
- 0.7kg weighs, handheld & compact
- 3-Year warranty



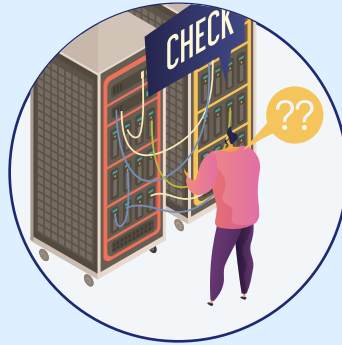
Four test modes meet your measurement needs

Real-time test:

Monitors link measurement information, but does not analyze event information.

Average test:

Fixed time measurement, the results and event information will be analyzed after the measurement.



Intelligent automatic

It is convenient for beginners to quickly complete the test

Expert Manual Mode

Select the expert manual mode to test



Model	KL-6200-S	KL-6200-P
Wavelength (nm)	SM 1310/1550	PON 1310/1550/1625 (built-in filter)
Dynamic range (dB)	32/30	32/30/28
Number of optical port	1	2
Distance range (Km)	0.5, 1, 2, 5, 10, 20, 35, 50, 75, 100, 150, 200	
Pulse width (ns)	5, 10, 20, 50, 100, 200, 500, 1000, 2000, 10000, 20000	
Event dead zone*1 (m))	1	
Attenuation dead zone*2 (m)	3.5	
Number of sampling points	Max 80000	
Sampling resolution	Min 0.04m	
Distance measurement accuracy	± (0.75 m + Measurement distance × 2 × 10 ⁻⁵ + Sampling resolution)	
Loss measurement accuracy	± 0.03 dB	
Return loss measurement accuracy	± 2 dB	

★1. Minimum pulse width, return loss: >55 dB (>40 dB for 850/1300 nm), group refractive index: 1.5, at 1.5 dB below the unsaturated peak level.

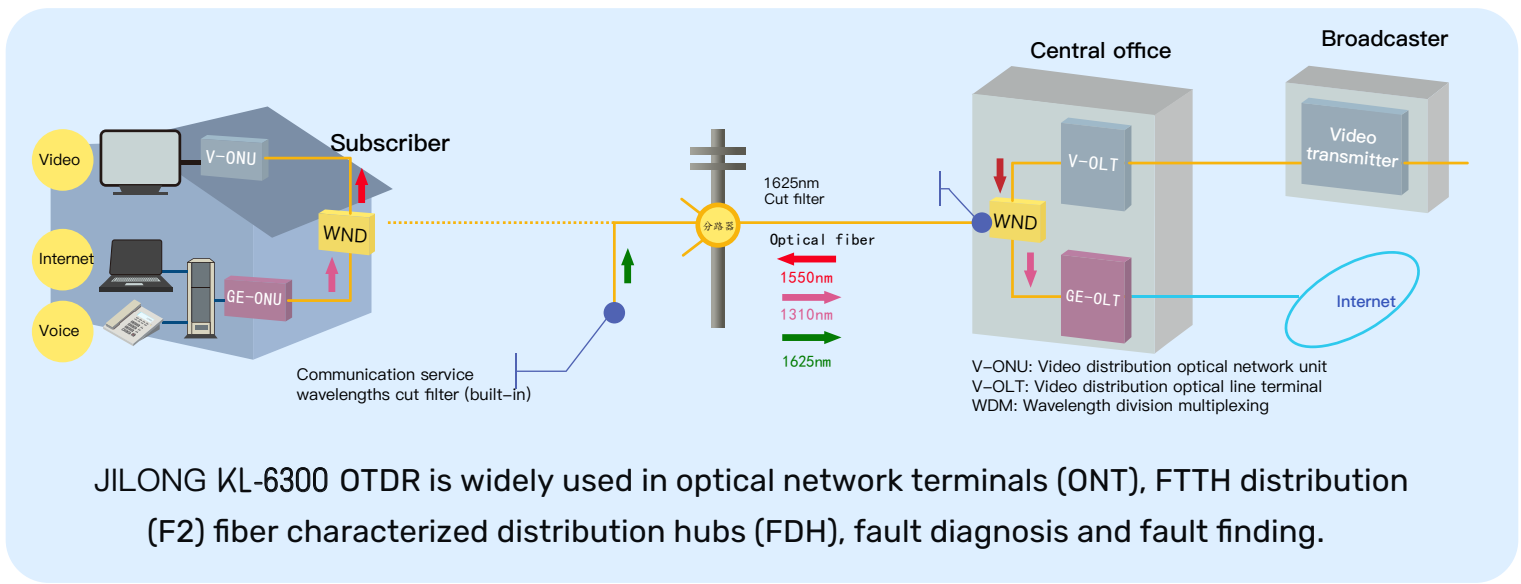
★2. Minimum pulse width, group refractive index: 1.5, at a point where the backscatter level is within +0.5dB of the normal level. For SMF, at 1310nm, return loss:>55dB.

All specifications valid at 23°C +2°C (73.4°F + 3.6°F) unless otherwise specified.

KL-6300

Fiber Monster OTDR

- 0.8m event dead zone
- 45dB dynamic range
- 7.0-inch LCD touch screen
- Multi-wavelength simultaneous test
- iOLA: One-click test PON fiber link
- Built-in OPM/SLS/VFL/FIP/RJ45/GPS modules
- Applicable fiber types: SM, MM, MS
- 3-Year Warranty



Fiber Type	Link Type		Test Application			
SM	Area	PON	Installation (measurement of live fibers and dark fibers)			
			Model / Description	Wavelength (nm)		Dynamic range (dB)
	Access network	1x32	KL-6300-S1 (Entry-level model)	1310 / 32	1550 / 30	
	Access network / Metropolitan area network	1x64	KL-6300-S2 (Basic model)	1310 / 35	1550 / 33	
			KL-6300-P1 (3 Wavelengths +live model)	1310 / 32	1550 / 30	1625 / 28
			KL-6300-P2 (High dynamic range wavelengths +live model)	1310 / 38	1550 / 36	1625 / 34
	Metropolitan network / Core network	1x128	KL-6300-P3 (High dynamic range wavelengths +live model) (Standard model)	1310 / 42	1550 / 40	1625 / 40
			KL-6300-S3 (Standard model)	1310 / 40	1550 / 38	
			KL-6300-S4 (High dynamic model)	1310 / 42	1550 / 40	
			KL-6300-S5 (Super-high dynamic model)	1310 / 45	1550 / 43	
MM	LAN		KL-6300-M (MM model)	850 / 20	1300 / 22	
			KL-6300-MS (SM&MMmodel)	850 / 20	1300 / 22	+ 1310 / 32 1550 / 30

KL-6400/6500

Optical Cable Identifier

- Intensity map mode & ECG mode
- Remote fiber disturbance monitoring
- Locating hybrid (a/v) fiber cables
- Connectivity: Wifi, data & remote control
- Built-in OPM/SLS/VFL/FIP/RJ45/GPS modules
- 3-year warranty



Model	KL-6400		KL-6500					KL-6510				
	S1	S2	S1	S2	S3	S4	S5	S1	S2	S3	S4	S5
Maximum distance (km)	40	80	40					80				
Wavelength (nm)	1550											
sampling frequency	≥200kHz											
ADC output	≥16bit											
Optical connector	FC/APC											
display mode	Waveform display/intensity display											
Bluetooth	✓											
OTDR	×		✓									

OLC-200

OTDR Dead Zone Eliminator

- Stainless steel hose sheath design
- Integrated coupler storage compartment
- Custom connector:FC/SC/ST/LC/E2,000
- Custom length: 100-2,000m
- Custom type: OS2/OM1/OM2/OM3



OLS-33

Optical Light Source

- 4.3-inch touch screen
- 5000mAh high-capacity battery
- ≥ 2 dBm output power
- Wavelength: SM: 1310/1550nm
- MM: 850/1300nm
- MS: 1310+1550/850+1300nm
- PON: 1310/1490/1550nm



Model	S	M	PON	MS
Wavelength(nm)	1310+1550	850+1300	1310+1490+1550	1310+1550/ 850+1300
Spectral width (nm)	≤ 5	/	≤ 5	
Output power (dBm)	≥ -2			
Output stability (dBm)	$\pm 0.05/15\text{min}$, $\pm 0.2/8\text{h}$			
Modulation frequency	CW, 270Hz, 1kHz, 2kHz			

OPM-33

Optical Power Meter

- 4.3-inch touch screen
- 1000 μm Photosensitive area
- 5000mAh high-capacity battery
- Accuracy: ± 0.2 dB
- Power stability: ± 0.01 dB
- Test range: $-70 \sim +6$ dBm
- 9-Wavelengths(850/1270/1300/1310/1490/1550/1577/1625/1650nm)



OPM-33P

WDM Optical Power Meter

- 4.3-inch touch screen
- 5000mAh high-capacity battery
- Built-in Demultiplexer | 1490/1550nm
- Fiber types: SM
- 7-Wavelengths (1270/1310/1490/1550/1577/1625/1650nm)



Application	GPON	
Wavelength	1490nm	1550nm
Spectral passband	850~1520nm	1530~1650nm
Isolation	1550nm Band > 35dB	1490nm Band > 35dB

GPN-33

GPON Optical Power Meter

- 4.3-inch touch screen
- 5000mAh high-capacity battery
- ± 0.01 dB power stability
- Burst mode test range: $-30 \sim +8$ dB
- Automatic Uplink/Downlink wavelength detection
- RJ45: Wire sequencing & Cable tracing function
- User-initiated calibration supports



Wavelength	1310nm	1490nm	1550nm
Power measurement range	$-35 \sim +10$ dBm	$-40 \sim +10$ dBm	$-40 \sim +25$ dBm
Spectral passband	1260-1360nm	1480-1500nm	1539-1565nm
Burst mode test range	$-30 \sim +8$ dB	/	/

XPN-33

10GPON Optical Power Meter

- 4.3-inch touch screen
- 5000mAh high-capacity battery
- Power stability: ± 0.2 dB
- Power test range: $-70 \sim +6$ dBm
- Spectral passband: 850-1520nm/1530-1650nm
- Automatic Uplink/ Downlink wavelength detection
- User-initiated calibration supports



Wavelength	1270nm	1310nm	1490nm	1550nm	1577nm
Spectral Passband	1260-1280nm	1290-1330nm	$-40 \sim +10$ dBm	$-40 \sim +25$ dBm	$-45 \sim +10$ dBm
Power measurement range	$-35 \sim +10$ dBm	$-35 \sim +10$ dBm	1480-1500nm	1540-1560nm	1539-1565nm
Maximum Output	15dBm	15dBm	10dBm	25dBm	10dBm
Burst mode test error	$< \pm 0.5$ dB	$< \pm 0.5$ dB	/	/	/

OPM-33V

OPM & VFL

- 4.3-inch touch screen
- 5000mAh high-capacity battery
- Built-in RJ45 & VFL
- Photosensitive area: 1000 μ m
- 9-wavelength: 850/1270/1300/1310/1490/1550/1577/1625/1650nm



FOT-33

Optical MultiMeter

- 4.3-inch touch screen
- 5000mAh high-capacity battery
- Photosensitive area:1000 μ m
- Measurement range:-70~+6dBm
- Power stability: ± 0.01 dB
- Wavelength of SLS:1310+20/1550+20nm
- 9-wavelength: 850/1270/1300/1310/1490/1550/1577/1625/1650nm



OVA-33

Optical Attenuator

- 4.3-inch touch screen
- 5000mAh high-capacity battery
- ± 0.2 dB power stability
- 80dB Maximum attenuation
- ± 0.2 dB Maximum attenuation error
- ≤ 2.0 dB Insertion Loss
- Test wavelength: 1310-1625nm;
- Calibration wavelength: 1310, 1550nm



OPM-22/22V

Mini Power Meter

- Wavelength: 800-1700nm
- Measurement accuracy: ± 0.2 d
- Measurement range -70~+6dBm/-50~+26dBm
- Connector types FC/SC/ST
- OPM-22V built-in VFL



OLS-33

Optical Light Source

- Wavelength: SM: 1310/1550nm
MM: 850/1300nm
MS: 1310+1550/850+1300nm
PON: 1310/1490/1550nm
- -5dBm output power
- Connector types: SC/ST/FC



2.5mm Universal adaptor



SC



ST



FC

VFL-22M

Mini Visual Fault Locator

- 30mW Output power
- 650 nm Bright red laser
- 1.25 mm LC Adapter (option)
- Built-in LED light
- Flashing and continuous operation modes

2.5mm Universal adaptor



SC



ST



FC



VFL-22P

Visual Fault Locator

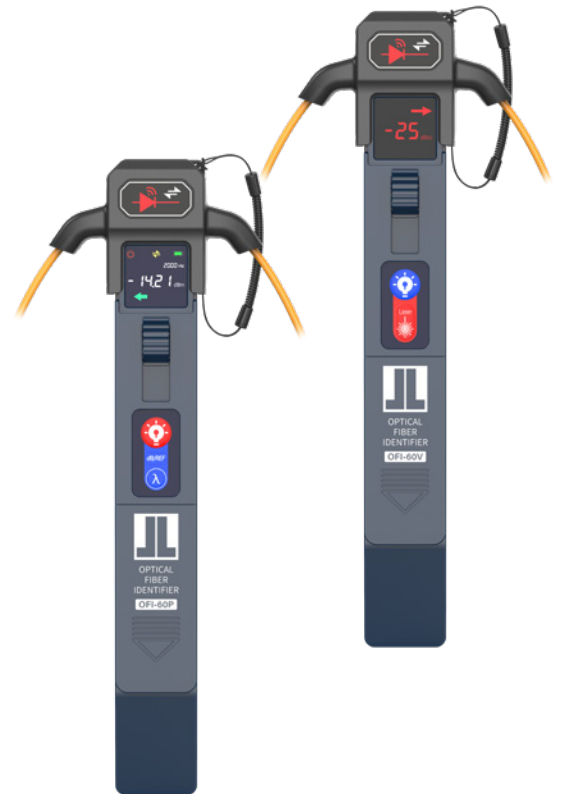
- 30 mW Output power
- 650 nm Bright red laser
- 1.25 mm LC Adapter (option)
- Flashing and continuous operation modes



OFI-60V/P

Optical Fiber Identifier

- Applicable fiber types: 0.25/0.9/2.0/3.0mm
- Test sensitivity -40dBm to 10dBm
- Recognize the signal of 270Hz, 1KHZ, 2KHz
- Test online without interruption of the link
- Built-in LED light
- Port: 2.5mm
- OFI-60V ('V' for Visual Fault Locator)
- OFI-60P ('P' for Power Meter)



4 Kinds of Chucks Easy to operate and change



3mm Jump fiber



2mm Jump fiber



900µm Pig tail fiber



250µm Bare fiber

FIP-43V

Fiber Inspection Scope

- 800x Magnification
- 4.3-inch touch screen
- 5000mAh Li-ion battery
- 9 connector types available
- Image zoom & center function
- One-Click export (FIP, PDF)
- Built-in OPM/VFL/RJ45



FIP-50V

Fiber Inspection Scope

- 800x Magnification
- 5.0-inch HD touch screen
- 5000mAh Li-ion battery
- 9 connector types available
- Image zoom & center function
- Intelligent Fail/Pass detection
- One-Click export (FIP, PDF)
- Built-in LED light



9 Connectors are optional



Standard-UPC end face
FC/ST/SC/LC/SC and LC female

Optional-APC end face
SC female and male/FC male

Magnification	800x
Automatic centering	✓
Resolution	≤1.0 μm
Visible range	0.316x0.285
Operating temperature	-10~ +50 °C
Storage temperature	-20~ +60 °C
Automatic shutdown time	10min

JBL-16/23

Cleaver Blade

- Tungsten steel refining and processing
- Cleave angle <math><0.5</math>
- Durable, up to 48000cleaves
- Rotatable 24 cutting points, per point reaches 200o cleaves



Featured material



Sharp blade



Durable



Rotatable Cutting Point	24
Blade Specification	22 * 4 * 3.2mm
Blade Material	Tungsten steel
D (g/cm) ³	14.75
Blade Hardness	91.50HRA
TRS (MPa)	2200
Cutting Life (Single Point)	2000 ★①

★① Blade life changes by operating environment

JL-ELE-N

Electrodes

- Tool-less electrodes replacement
- Stable discharge 3000-5000 times
- Sharp top, uniform discharge, easy splicing
- The tail is made of high temperature resistant insulation material
- Imported tungsten steel material, high hardness, no deformation
- Hanging hole design, convenient offline platform, agent, store sales



Tool-less electrodes replacement



Imported tungsten steel



Hanging hole design



Based in China
Servet the world



国际市场

产品覆盖亚洲，欧洲，美洲，大洋洲等主要销售国家和地区
吉隆产品销往86个国家和地区，深受海内外客户的喜爱和认可

Building Century-old brand-JILONG
Pioneer of fusion splicer

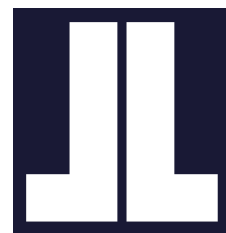
NANJING JILONG Optical Communication Co, Ltd.

Add: No. 8, Huyue East Road, Longchi Street, Liuhe District, Nanjing, China

Web: www.JILONGOT.com

Mail: info@jilongot.com

TEL: +86 400 883 6695



Website